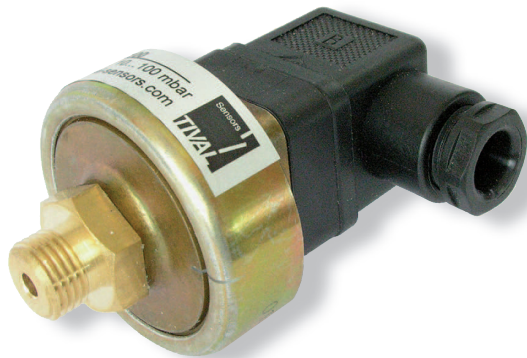


Pressure switch FF 501

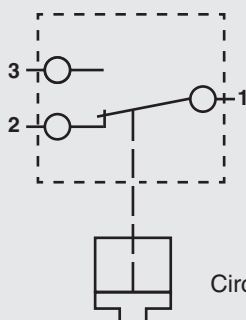
10 ... 1000 mbar



Description

Model range FF 501 pressure switches are change-over contact equipped. The subtle pressure range grading allows a precise switchpoint adjustment within mbar range.

- Subtle pressure range grading, accurate adjustment
- High-rated maximum operating cycles
- Factory pre-calibrated types available



Circuit diagram

Types

Pressure switch with diaphragm for mbar range usage, pressure connection G 1/4" male

Order reference	Adjustment range	Over-pressure safety	Sealing type
FF 501-50	10 ... 50 mbar	1 bar	NBR- or silicone diaphragm
FF 501-100	10 ... 100 mbar	1 bar	NBR- or silicone diaphragm
FF 501-200	20 ... 200 mbar	2 bar	NBR- or silicone diaphragm
FF 501-500	50 ... 500 mbar	2 bar	NBR- or silicone diaphragm
FF 501-1000	100 ... 1000 mbar	5 bar	NBR- or silicone diaphragm

Technical data	Type: FF 501
Reproducibility	~ 3 ... 5 %
Switch-back difference	~ 5 ... 10 %
Circuit element	Change-over contact
Max. operating cycles	200 / min.
Max. voltage	250 V
Max. current	5 Amp. (FF 501-50: 2 A)
Protection class	IP 55
Operating temperature	-20 ... +80 °C
Weight	~ 185 g
Connection thread	G 1/8", G 1/4"

Please state medium and desired mounting position when ordering. Special types (i.e. gold-plated switch contacts) upon request.